

136/2014 - 12 September 2014

Second quarter of 2014 compared with first quarter of 2014

Employment up by 0.2% in euro area and by 0.3% in the EU28

+0.4% and +0.7% respectively compared with the second quarter of 2013

Announcement

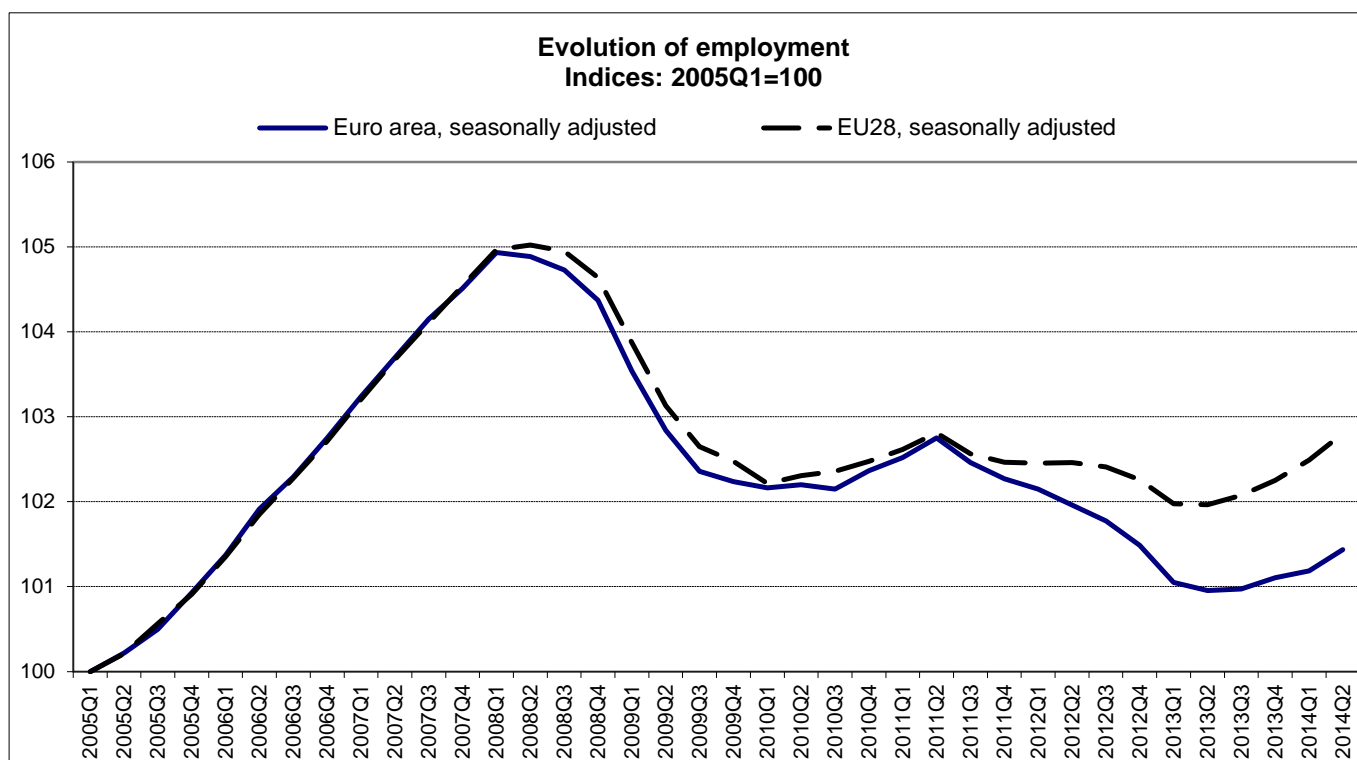
This News Release is the last News Release on employment based on the ESA95 methodology.
Please see the enclosed annex for further details.

The number of persons employed¹ increased by 0.2% in the **euro area**² (EA18) and by 0.3% in the **EU28**² in the second quarter of 2014 compared with the previous quarter, according to national accounts estimates published by **Eurostat, the statistical office of the European Union**. In the first quarter of 2014, employment rose by 0.1% in the **euro area** and 0.2% in the **EU28**. These figures are seasonally adjusted.

Compared with the same quarter of the previous year, employment grew by 0.4% in the **euro area** and by 0.7% in the **EU28** in the second quarter of 2014 (after +0.1% and +0.6% respectively in the first quarter of 2014).

Eurostat estimates that, in the second quarter of 2014, 224.9 million men and women were employed in the **EU28**, of which 146.5 million were in the **euro area**. These figures are seasonally adjusted.

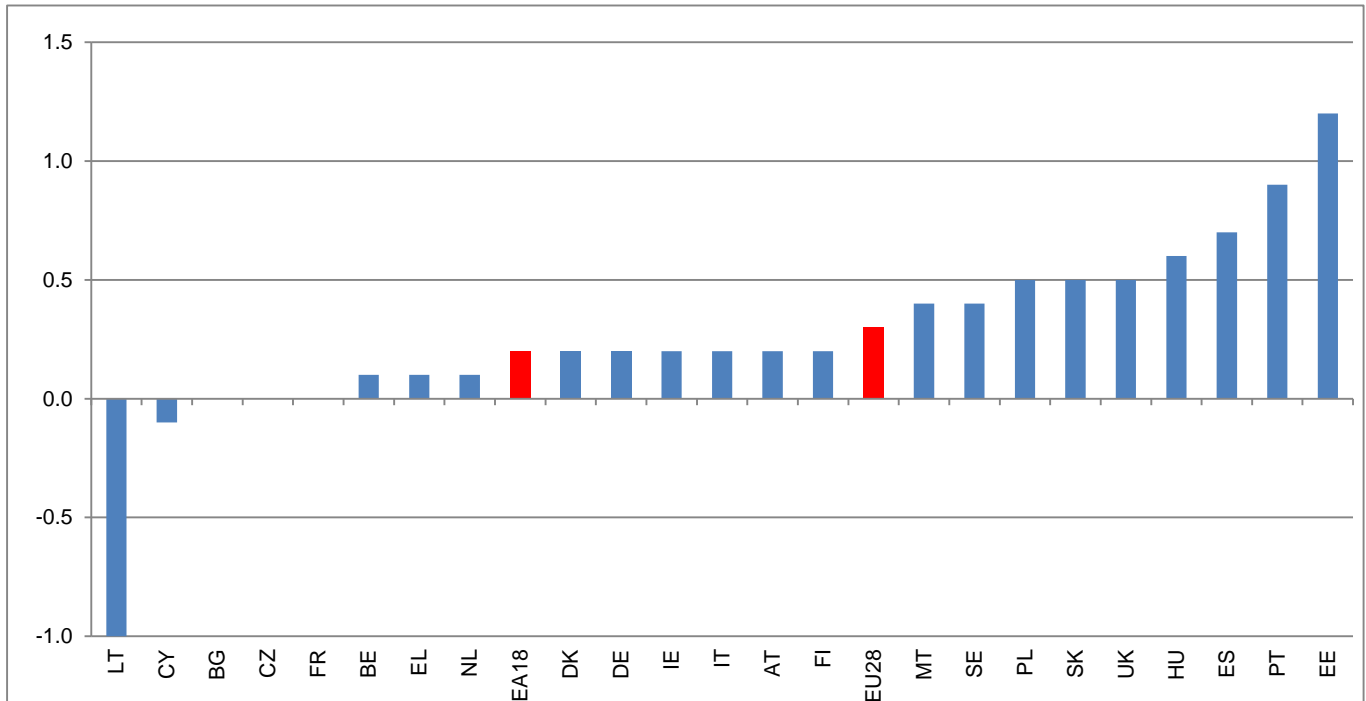
These quarterly data on employment provide a picture of labour input consistent with the output and income measure of national accounts.



Employment growth in Member States

Among Member States for which data are available, **Estonia** (+1.2%), **Portugal** (+0.9%) and **Spain** (+0.7%), recorded the highest increases in the second quarter of 2014 compared with the previous quarter, while **Lithuania** (-1.0%) and **Cyprus** (-0.1%) registered decreases.

Member States' growth rates for employment in the second quarter of 2014 % change over the previous quarter, seasonally adjusted



Croatia, Latvia, Luxembourg, Romania and Slovenia: data not available.

1. Employment covers employees and self-employed working in resident production units (i.e. the domestic employment concept). Unless otherwise stated, all employment estimates in this release use *persons* as the measurement unit. ESA95 acknowledges other possible measures for employment: jobs, full-time equivalents and total hours worked. More information on employment in national accounts is available on Eurostat's website: http://epp.eurostat.ec.europa.eu/portal/page/portal/national_accounts/methodology/employment.
2. The euro area (EA18) includes Belgium, Germany, Estonia, Ireland, Greece, Spain, France, Italy, Cyprus, Latvia, Luxembourg, Malta, the Netherlands, Austria, Portugal, Slovenia, Slovakia and Finland. The EU28 includes Belgium (BE), Bulgaria (BG), the Czech Republic (CZ), Denmark (DK), Germany (DE), Estonia (EE), Ireland (IE), Greece (EL), Spain (ES), France (FR), Croatia (HR), Italy (IT), Cyprus (CY), Latvia (LV), Lithuania (LT), Luxembourg (LU), Hungary (HU), Malta (MT), the Netherlands (NL), Austria (AT), Poland (PL), Portugal (PT), Romania (RO), Slovenia (SI), Slovakia (SK), Finland (FI), Sweden (SE) and the United Kingdom (UK).

Issued by: **Eurostat Press Office**

Tim ALLEN
Tel: +352-4301-33 444
eurostat-pressoffice@ec.europa.eu

For further information on data:

Christine GERSTBERGER
Tel: +352-4301-30 175
estat-gdp-query@ec.europa.eu

Eurostat news releases on the internet: <http://ec.europa.eu/eurostat>
Selected Principal European Economic Indicators: <http://ec.europa.eu/eurostat/euroindicators>
Follow Eurostat on Twitter: http://twitter.com/EU_Eurostat

Employment growth rates*

	Percentage change compared with the previous quarter				Percentage change compared with the same quarter of the previous year			
	2013		2014		2013		2014	
	Q3	Q4	Q1	Q2	Q3	Q4	Q1	Q2
EA18	0.0	0.1	0.1	0.2	-0.7	-0.4	0.1	0.4
EU28	0.1	0.2	0.2	0.3	-0.3	0.0	0.6	0.7
Member States								
Belgium	0.1	0.0	0.0	0.1	-0.2	-0.1	0.1	0.2
Bulgaria	-0.2	-0.1	0.2	0.0	-0.1	-0.7	0.3	0.3
Czech Republic	-0.5	0.0	0.5	0.0	0.7	0.7	0.6	0.1
Denmark	0.2	0.0	0.3	0.2	0.3	0.5	0.8	0.8
Germany**	0.2	0.1	0.2	0.2	0.6	0.5	0.7	0.8
Estonia	-1.5	-1.3	0.3	1.2	1.3	0.8	-1.1	-1.2
Ireland**	0.9	0.5	0.1	0.2	3.2	3.2	2.3	1.7
Greece	-0.7	0.2	-0.1	0.1	-2.9	-2.6	-0.5	-0.5
Spain	-0.4	0.6	0.0	0.7	-2.7	-1.3	-0.2	1.0
France**	0.0	0.0	0.0	0.0	-0.2	-0.1	0.0	0.0
Croatia***	:	:	:	:	-1.6	c	c	:
Italy***	-0.1	-0.1	0.0	0.2	-2.1	-1.8	-0.9	:
Cyprus	-0.9	-0.3	-0.4	-0.1	-5.8	-4.3	-3.4	-1.4
Latvia***	-0.1	-1.1	0.8	:	1.8	-0.3	0.1	:
Lithuania	1.0	-0.9	1.6	-1.0	0.8	2.3	2.3	0.9
Luxembourg	0.6	0.6	0.6	:	1.8	1.8	2.3	:
Hungary	0.4	0.6	1.5	0.6	0.6	1.0	3.2	3.1
Malta	1.6	0.7	-0.1	0.4	3.5	4.5	3.2	2.6
Netherlands**	0.3	0.1	0.2	0.1	1.2	1.2	-0.9	0.5
Austria	0.3	0.3	0.3	0.2	0.8	1.0	1.2	1.1
Poland	0.4	0.0	0.6	0.5	0.0	0.7	1.7	1.5
Portugal**	1.1	-0.1	-0.3	0.9	-2.3	0.6	1.4	1.6
Romania	:	:	:	:	-0.1	-0.4	1.1	-3.1
Slovenia**	:	:	:	:	-1.5	-0.3	0.3	0.7
Slovakia	0.2	0.3	0.4	0.5	-0.9	0.1	0.6	1.4
Finland**	-1.2	0.3	0.0	0.2	-2.1	-1.6	-0.9	-0.7
Sweden	0.3	0.4	0.2	0.4	1.0	1.2	1.0	1.3
United Kingdom***	0.6	0.6	0.9	0.5^e	1.3	1.4	2.5	2.7^e
EFTA countries								
Norway	0.4	0.3	0.2	0.3	1.2	1.2	1.3	1.3

: Data not available

c confidential

e estimate

* Percentage change in the number of persons employed in resident production units compared with the previous quarter based on seasonally adjusted data. Percentage change compared with the same quarter of the previous year based on non-seasonally adjusted data.

** All growth rates based on ESA 2010 methodology. Information on data particularities in the transitional period can be found under: "Latest News / Information on the transition to ESA 2010" on the website:

http://epp.eurostat.ec.europa.eu/portal/page/portal/national_accounts/introduction

*** Limited data transmissions due to transition to ESA 2010.

Annex – the revised European System of National and Regional Accounts (ESA 2010)

This is the last News Release on Employment data to be based on the previous version of the European System of National and Regional Accounts (ESA 1995).

The first estimation of ESA 2010 based European main GDP aggregates and employment is planned for mid-October 2014.

The next regular News Release on Employment – for the third quarter of 2014 to be issued on 12 December – will be the first to be based on ESA 2010.

The ESA sets down the harmonised methodology used for the production of national accounts data in the EU. It ensures that statistics on Member States' economies are compiled in a consistent, comparable, reliable and up-to-date way.

The previous methodological framework for producing national accounts data (ESA 1995) is almost twenty years old. Over these last twenty years, substantial changes have impacted economies, in particular the increasing role of ICT in production processes, the growing importance of intangible assets, intellectual property products and services, and the globalisation of economic systems. The way in which macroeconomic statistics are compiled needs to be adjusted accordingly, to reflect these changes. It is not a revolution, but a necessary adaptation.

It is important to stress that this adaptation of the system of accounts is not only European, but world-wide. Europe's ESA 2010 is the sister of the 2008 SNA, adopted by the United Nations Statistical Commission, which has already been implemented, among others, in USA, Australia and Canada.

See http://epp.eurostat.ec.europa.eu/portal/page/portal/esa_2010/introduction for more details.

T1

TOTAL EMPLOYMENT AND EMPLOYMENT BY INDUSTRY

t/t-1

PERCENTAGE CHANGE OVER THE PREVIOUS QUARTER – SEASONALLY ADJUSTED

NACE Rev 2	Total economy				Agriculture, forestry and fishing				Industry (mining, manufacturing, electricity, water and waste)				of which: Manufacturing				Construction				Trade, transport, accommodation and food service activities			
Section					A				B, C, D and E				C				F				G, H and I			
	2013		2014		2013		2014		2013		2014		2013		2014		2013		2014		2013		2014	
	Q3	Q4	Q1	Q2	Q3	Q4	Q1	Q2	Q3	Q4	Q1	Q2	Q3	Q4	Q1	Q2	Q3	Q4	Q1	Q2	Q3	Q4	Q1	Q2
EA18	0.0	0.1	0.1	0.2	0.0	-0.2	-0.1	-0.2	-0.3	0.2	0.2	0.5	-0.4	0.1	0.3	0.5	-0.4	-0.6	-0.9	0.0	-0.1	0.2	-0.1	0.5
EU28	0.1	0.2	0.2	0.3	-0.6	-1.0	1.5	-0.1	-0.1	0.2	0.3	0.4	-0.1	0.1	0.5	0.5	0.0	-0.3	-0.4	0.1	0.0	0.3	0.1	0.5

NACE Rev 2	Information and communication				Financial and insurance activities				Real estate activities				Professional and support service activities				Administration and other public services				Arts, entertainment and other services			
Section	J				K				L				M and N				O, P and Q				R, S, T and U			
	2013		2014		2013		2014		2013		2014		2013		2014		2013		2014		2013		2014	
	Q3	Q4	Q1	Q2	Q3	Q4	Q1	Q2	Q3	Q4	Q1	Q2	Q3	Q4	Q1	Q2	Q3	Q4	Q1	Q2	Q3	Q4	Q1	Q2
EA18	-0.3	0.7	0.1	0.5	0.1	-0.1	0.0	-0.8	0.3	-1.2	1.3	0.0	0.5	0.1	0.4	0.4	0.2	0.3	0.2	0.0	0.3	0.1	0.3	0.3
EU28	-0.2	0.6	0.2	0.4	0.0	-0.1	0.6	-0.5	1.1	-0.6	0.4	0.0	0.7	0.3	0.3	0.5	0.2	0.3	0.1	0.2	0.4	0.4	0.3	0.4

T2

TOTAL EMPLOYMENT AND EMPLOYMENT BY INDUSTRY

t/t-4

PERCENTAGE CHANGE OVER THE SAME QUARTER OF THE PREVIOUS YEAR – NON-SEASONALLY ADJUSTED

NACE Rev 2	Total economy				Agriculture, forestry and fishing				Industry (mining, manufacturing, electricity, water and waste)				of which: Manufacturing				Construction				Trade, transport, accommodation and food service activities			
Section					A				B, C, D and E				C				F				G, H and I			
	2013		2014		2013		2014		2013		2014		2013		2014		2013		2014		2013		2014	
	Q3	Q4	Q1	Q2	Q3	Q4	Q1	Q2	Q3	Q4	Q1	Q2	Q3	Q4	Q1	Q2	Q3	Q4	Q1	Q2	Q3	Q4	Q1	Q2
EA18	-0.7	-0.4	0.1	0.4	-0.3	-0.5	1.0	-1.3	-1.5	-1.0	-0.4	0.1	-1.6	-1.0	-0.5	0.1	-4.0	-3.1	-2.8	-1.1	-0.9	-0.3	0.0	0.9
EU28	-0.3	0.0	0.6	0.7	-1.9	-2.6	1.1	-2.5	-0.8	-0.3	0.1	0.3	-0.9	-0.4	0.1	0.2	-2.9	-2.0	-0.9	-0.5	-0.6	0.1	0.4	1.2

NACE Rev 2	Information and communication				Financial and insurance activities				Real estate activities				Professional and support service activities				Administration and other public services				Arts, entertainment and other services			
Section	J				K				L				M and N				O, P and Q				R, S, T and U			
	2013		2014		2013		2014		2013		2014		2013		2014		2013		2014		2013		2014	
	Q3	Q4	Q1	Q2	Q3	Q4	Q1	Q2	Q3	Q4	Q1	Q2	Q3	Q4	Q1	Q2	Q3	Q4	Q1	Q2	Q3	Q4	Q1	Q2
EA18	0.4	0.2	0.5	0.8	-0.3	-0.3	-0.3	-0.7	-1.0	-1.5	0.3	0.8	0.3	0.6	1.6	1.5	-0.1	0.1	0.5	0.6	-0.2	-0.4	0.1	-0.3
EU28	1.0	0.3	0.7	1.4	-0.7	-0.5	0.2	-0.2	3.1	2.5	1.9	1.3	1.2	1.5	2.0	1.8	0.5	0.4	0.8	1.0	0.1	0.3	0.8	0.3